

PV-ezRack SolarTerrace III-A

**Universal ground mount frame for corrosive environments and
for tough soil conditions**



PV-ezRack SolarTerrace III-A

Universal ground mount frame for corrosive environments and for tough soil conditions

Manufactured from high quality structural grade and anodised aluminium PV-ezRack SolarTerrace III-A is the perfect mounting solution for corrosive environments. The support legs can be installed either with concrete ballast footing or on ground screws which makes it suitable for almost every soil condition. Its user friendly high level of prefabrication makes it easy to install and therefore practical for smaller commercial and even for residential installations. STIII-A is also suitable for fixing thin film panels.

Key Benefits

Durable even in harsh environments

STIII-A contains only 6005 Aluminium alloy and 304 stainless steel (316 on request), which makes it suitable for even the toughest environments, such as corrosive sites close to coastlines.

Support leg is delivered in one piece

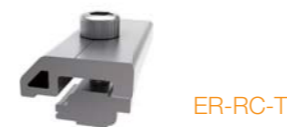
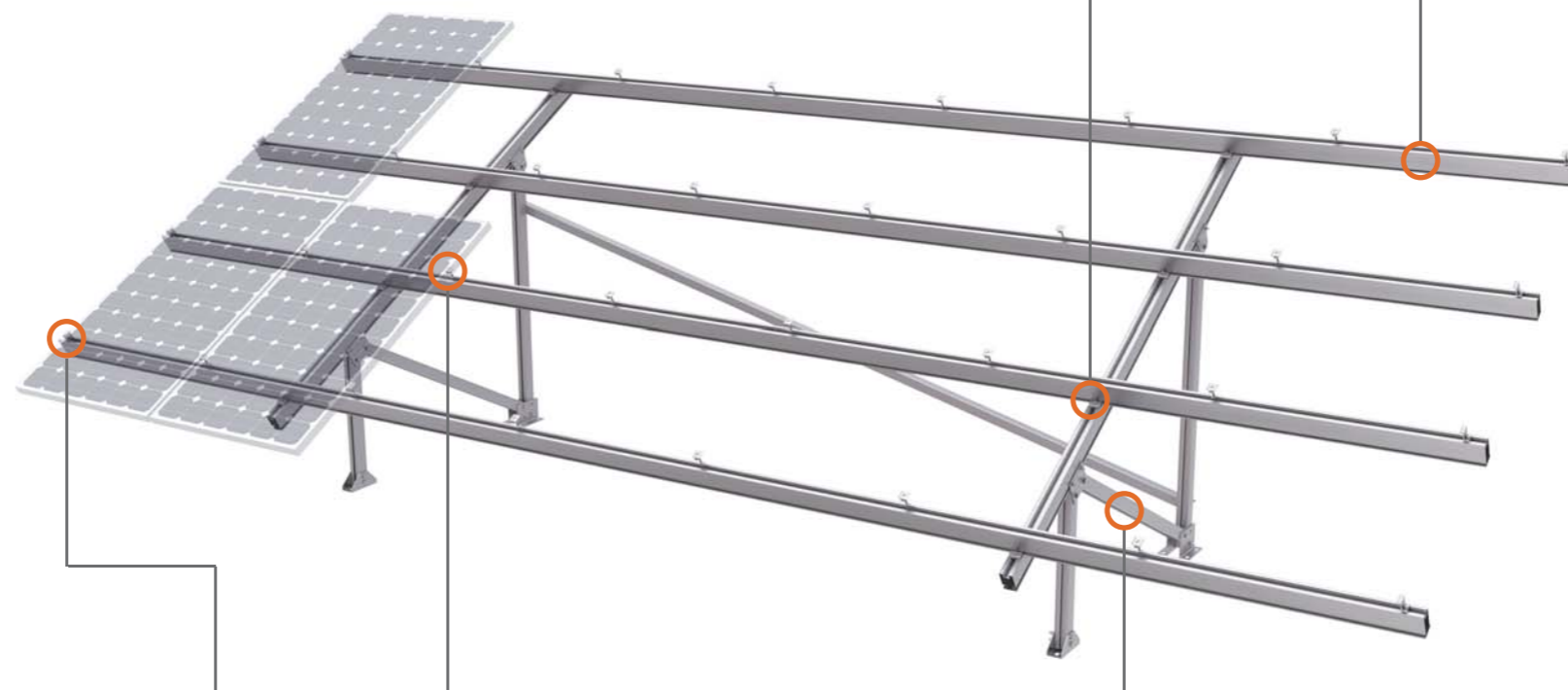
The support legs of the STIII-A are completely pre-assembled, they only need to be opened up and secured to the foundation. They even have the positioning rail clamps pre-installed**, so you don't need to measure and mark the rail positions anymore. The combination of these features is saving valuable time in assembly and logistics, making it one of the fastest systems on the market.

Suitable for all soil and ground types

The support legs can be installed either with a concrete ballast footing or with ground screws. This makes STIII-A suitable for the most challenging soil conditions where ramming is not possible.

Simplicity

Sometimes bill of materials can be confusing and complicated. Not with Clenergy, on a BOM for STIII-A you will only find 6 components: support legs, rails, rail-clamps, splices, mid and end clamps. Keeping it simple and transparent helps all parties to understand and work with the product better.



Rail Clamp for T-Rail

Rail-Clamps establish a secure connection between support legs and rails with our patented Z-Module technology. Available with grounding pins for earthing.



T-Rail 110

The rail profile has been specifically developed to achieve larger spans reducing the number of legs to be installed. These have a Z-Module channel for panel mounting and are secured with the Rail Clamps to the support legs.



Support

The STIII-A supports are completely pre-assembled, they only need to be unfolded and secured to the foundation. The anodised aluminium alloy profiles are connected with stainless steel fasteners. Furthermore through this new design the legs can be adjusted vertically by 50mm allowing for adjustments in case the foundation requires it. For larger projects the positioning rail clamps can be preassembled**, which means that the rail positions don't have to be measured.



Inter and End clamps

The PV-ezRack inter- and end clamps offer a simple, easy to use and robust fixing of the PV panels (all sizes) using the patented Clenergy Z-module. Compatible clamps for thin film modules are available.

Available accessories

- Grounding/earthing
- Cable clips
- Cable trays
- Inverter/joint box bracket

Contact us or one of our qualified resellers for a personalised quotation today.

10 Year Warranty*

Commercial

Residential


 12 Panels per man-hour
(foundation excluded)

*see Clenergy PV-ezRack warranty for further details
 **available for direct shipments from 250kW



Worldwide network



Clenergy Australia

Unit 11, 20 Duerdin St, Clayton VIC 3168, Australia
 Tel: +61 3 9239 8088 Fax: +61 3 9239 8024
 E-mail: sales@clenergy.com.au www.clenergy.com.au

Clenergy America

5755 Oberlin Drive, Suite 328, San Diego CA 92121
 Tel: +1 858 790 8066
 E-mail: sales@clenergy.us www.clenergy.us

Clenergy China

999-1009 Min'an Rd, Huoju Hi-tech Ind. Dev. Zone
 Xiang'an District 361101, Xiamen, Fujian, China
 Tel: +86 592 311 0088 Fax: +86 592 599 5028
 E-mail: sales@clenergy.com.cn www.clenergy.com.cn

Clenergy Europe

Clenergy Court, Blisworth Hill Farm Stoke Road, Blisworth
 Northampton, NN7 3DB, UK
 Tel: +44 1604 857 674 Fax: +44 1604 858 620
 E-mail: sales_uk@clenergy.com www.clenergy.uk.com

Clenergy Japan

SOHO STATION 401, 24-8 Yamashita-cho, Naka-ku
 Yokohama, 231-0023 Japan
 Tel: +81 45 228 8226 Fax: +81 45 228 8316
 E-mail: sales@clenergy.co.jp www.clenergy.jp

Clenergy Malaysia (Regional Office)

Suite 21, E111, Block E, Phileo Damansara, I No 9 Jalan 16/11,
 Off Jalan Damansara, 46350 Petaling Jaya, Selangor, Malaysia
 Tel: +60 3 7493 5186 Fax: +60 3 7493 5100
 E-mail: sales@clenergy.my www.clenergy.my



**10 Year
 Warranty***