



PV-ezRack ezShade

The Universal Ground Mounted Solution



PV-ezRack ezShade

Clenergy PV-ezRack ezShade is an economical ground mounted system for landscape module installation that provides shelter for parking. It is designed for high wind speed and snow loads. The combination of Clenergy's patented aluminium base rail, Z-module technology and rail splicing saves you the trouble of on-site cutting for fast installation. The anodised aluminium components combined with this specific structural design result in an optimal balance between aesthetics and cost effectiveness.

Main Benefits

Customized Solution

We offer customized solution for PV-ezRack ezShade with optional one-car span or two-car span. Both silver anodized and black anodized products are available.

Durability

The whole anodised aluminium structure gives the system a decent look and anti-corrosive quality as well. It is a good choice for even the toughest environment, such as sites near the coastline.

Rubber Seal Function

In some markets, this product is available with the rubber seal option for a premium. The version without rubber seal is the more economical option.

Maximized Compatibility

Designed as a flexible solution, PV-ezRack ezShade is compatible with most framed and frameless solar modules.



ER-R-T150

T-Rail, 150

The rail profile has been specifically developed to achieve larger spans reducing the number of legs to be installed.



ER-B-L/A

Dry Bar-Landscape

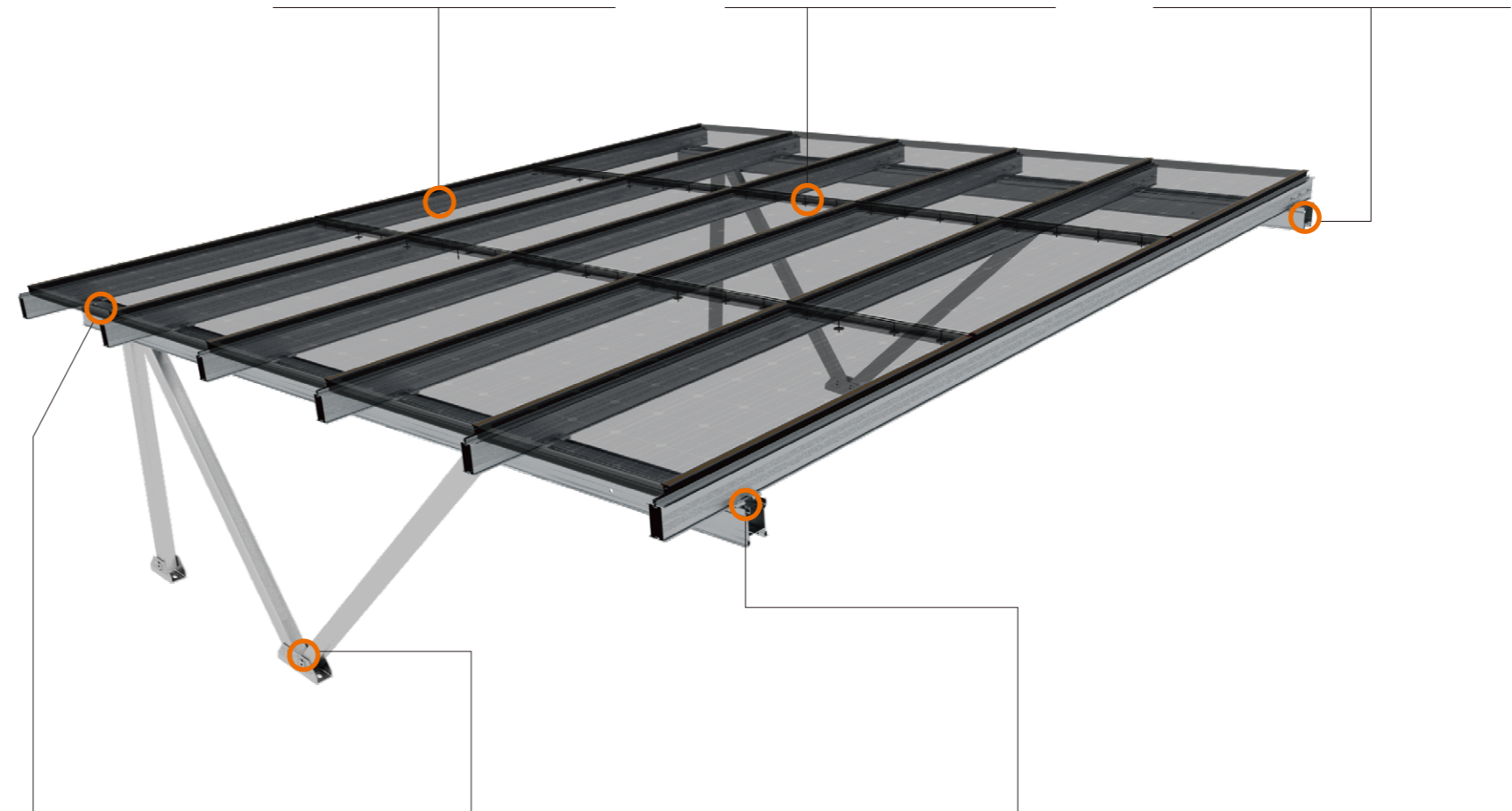
Used for mounting the modules in Landscape orientation, it also offers the seal function with EPDM rubbers.



ER-B-150

Main Support Beam

Two main support beams combined with splices work as a girder to provide high strength support for T-rail 150. Efficient design ensures effective use of material and ease of installation.



ER-B-P

Dry Bar-Portrait

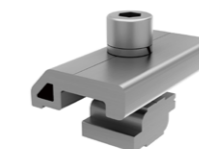
Dry bar not only works as module fixture, but also offers the seal function with EPDM rubbers.



U-AP/TR/380 U-AP/TR/250 RT-100/90/L

Support

Rectangular Tube and Trapezoidal U-anchor Plate constitute the N-shape Support to bear the whole system.



ER-RC-T

Rail Clamp for T Rail

The special rail clamp with patented Z-module is used to secure the rails to the structure. It can be clicked in any part of the rail, no need to slide in one the end of the rail, which makes installation easy and fast.

Materials

AL6005-T5 | SUS304 | Q235

Contact us or one of our qualified resellers for a personalised quotation today.

10 Year Warranty*

Commercial

Residential

International Patent
PCT/AU2009/000616

*see Clenergy PV-ezRack warranty for further details



Worldwide network



Clenergy Australia

1/10 Duerdin Street, Clayton VIC 3168 Australia
 Tel: +61 3 9239 8088 Fax: +61 3 9239 8024
 E-mail: sales@clenergy.com.au www.clenergy.com.au

Clenergy China

999-1009 Min'an Rd, Huoju Hi-tech Ind. Dev. Zone
 Xiang'an District 361101, Xiamen, Fujian, China
 Tel: +86 592 311 0088 Fax: +86 592 599 5028
 E-mail: sales@clenergy.com.cn www.clenergy.com.cn

Clenergy Europe

Esplanade 41, 20354 Hamburg, Germany
 Tel: +49 40 3562 389-00
 E-mail: sales_de@clenergy.com

Clenergy Japan

SOHO STATION 401, 24-8 Yamashita-cho, Naka-ku
 Yokohama, 231-0023 Japan
 Tel: +81 45 228 8226 Fax: +81 45 228 8316
 E-mail: sales@clenergy.co.jp www.clenergy.jp

Clenergy Philippines

145 Yakal St., San Antonio village, Makati City, Philippines
 Tel: +63 977 8407282 +63 977 8407240
 E-mail: sales_ph@clenergy.com www.clenergy.ph

Clenergy Thailand

9/2, 5th Floor, Vorasin Building, Soi Yasoob 2, Viphavadee-Rungsit Road,
 Chomphon Sub-district, Chatuchak District, Bangkok 10900
 Tel: +66 63 228 0200, +66 81 969 5152
 E-mail: sales_th@clenergy.com, support_th@clenergy.com

Clenergy Singapore

24 Raffles Place #28-01 Clifford Centre Singapore 048621
 Tel: +65 9743 1425
 E-mail: vincent.chan@clenergy.com

